

Prefigurative Architecture

Precedents

Research

Arron

Reed

Content

Prefigurative Theory

Reading List Summary

Precedent:

10x10 Housing Initiative

What can Design do?

Open Architecture Collective

Toxeth Food Central

PROTOhome

Dry Toilet

Conclusion

Prefigurative Theory

Prefigurative by Means Through

Social Movements

Actions:

Left wing critique - Market

Decommodification

Solidarity,

Experimental Political Practice

Seeking alternatives to confront

limitations of existing organisational infrastructure

Time:

Mediation - Beyond representation, regulation or law,

Future is not detached from the present.

Prefigurative by Means Through

Capitalism

Actions:

Speculation of Urban Land,
Deterritorialise, Deregulate,
Liberalisation and Limits of
Government,
Transitional Corporations.

Time:

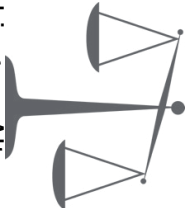
Simulation and Predictability
Economy of Algorithms



Community Solidarity



Experimental Practice



Seeking an Alternative



Expanding



Decommodification



Limiting Government and
Organisational Structure



Future in the Present

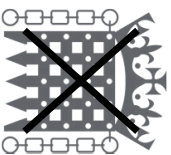


Beyond Law

Reading Summary

David Harvey

Madden, D. and Marcuse, P. (2016). In Defense of Housing. 1st ed. London: Verso.



Harvey wants to ignite a theory and construct an argument in his book 'Spaces of Hope', one that is situated in the ideas of culture and diversity within a urban fabric drowned in a system of modern capitalism. To do this, an understanding of urban scales and the changes in dwelling is needed, as well as the organisation of communities and nations that make humanity.

He applies his knowledge of Marxism to new challenges in the developed world and focuses on globalisation and the potential of being enclosed within dreams of anti-capitalism. Through his constructed argument, Harvey outlines that there is no alternative but through his critique he offers a contradiction. Harvey describes an ideology revolved around human rights and targets to unify a divided

world. He then explains a series of contradictions referring Marx's account of capitalism and taking advantage of labour and how it is being exaggerated in today's society.

His solution is to find a 'spatial' fix to the worlds economic crisis, and a struggle for new human rights.

The spacial transformation of urban fabric by approaching insurgent architects describes the utopian measures by which Harvey is trying to live by in the present. He

underlines historical projects of utopianism and their limitations, specific, the idea that their utopia's are set in future times and so heavily depended on the state presented too many barriers and Harvey suggests a new utopia, a

'Dialectical Utopia' which addresses the need for social change but also our embeddedness in our existing world.



Reading Summary

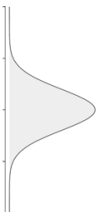
David Harvey

Brenner, N., Marcuse, P. and Mayer, M. (2012). *Cities for People, Not for Profit*. 1st ed. New York: Routledge.

Harvey talks a lot about

contradictions and the main contradiction which he presents that is directly related to our module is the contradiction between use and exchange value. He states that with all commodities, one has to understand them in terms of the use value and exchange value - it is the same whether the subject is buying a steak dinner or buying a house.

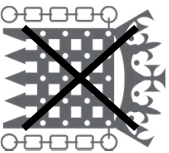
He talks that historically the use value of a commodity was superior to the exchange value. Today however, he points out that the statures of the use and exchange value have reversed and that exchange value is now the driving force in today's markets, so much so, that prediction, investment and speculation to accumulate exchange value are better than enabling use values.



Reading Summary

Marcuse + Madden

Madden, D. and Marcuse, P. (2016). In Defense of Housing. 1st ed. London: Verso.



Through David Madden and Peter Marcuse' text, 'In Defence of Housing, 3 successful points have been achieved. They boldly make a case for housing to be a part of mainstream politics. They include housing in wider social theory such as Marxism. Lastly, they have provided a platform for activists to challenge the neoliberal policies on housing.

Madden and Marcuse also discuss Lefebvre's 'Right to the City' which demands for a transformation of urban life which we can experience in developing countries. The book displays **certain apprehensions of the questionable concept of rights**, ones that don't necessarily challenge what is wrong with the existing procedure.



Other than their statement that housing is political, they consider the whole social concept of the housing crisis. Referencing Engels, they argue that the crisis is global under capitalism, discussing that housing is now heavily rooted with global finance as it is revolved around the exchange commodity instead of social assets or shelter.



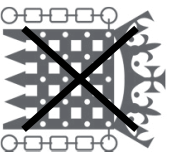
Reading Summary

Brenner, Marcuse + Mayer

Brenner, N., Marcuse, P. and Mayer, M. (2012). Cities for People, Not for Profit. 1st ed. New York: Routledge.

In the book, 'Cities for People, Not for Profit', is an exploration of Marcuse's pursuit of the right to the city. The difference between Marcuse and Lefebvre is two fold.

Throughout this book, **urban theory and pragmatic analysis of the city is heavily critiqued to identify possibilities towards increasing rights to the city.**

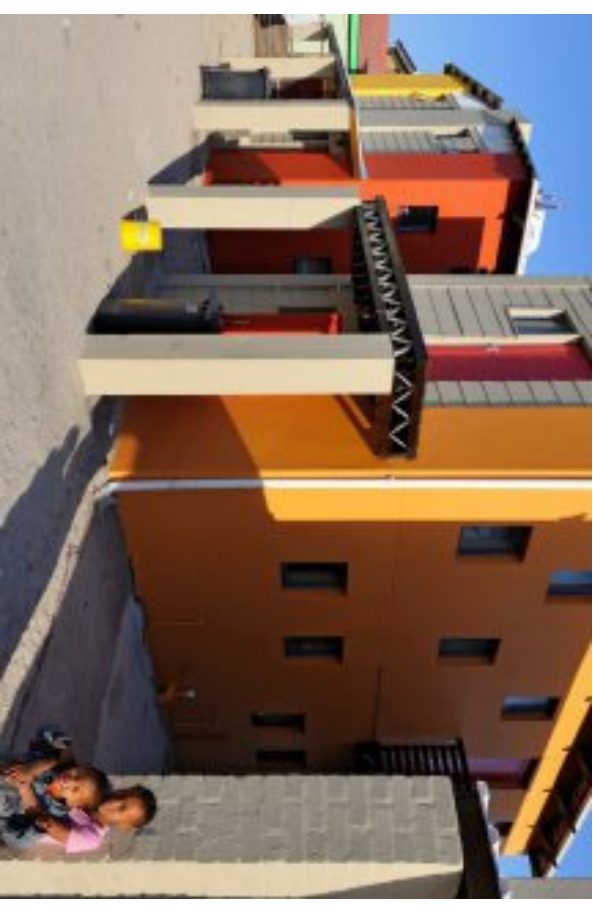


On the one hand, Marcuse has an underlining opposition to modern day capitalism. On the other hand Marcuse has a vision of heavy pragmatism in particularly an interest into what can be done immediately.

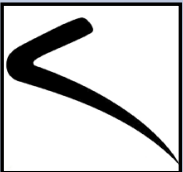


The text displays an attitude of questioning the way things are instead of accepting them which reveals two forms of critique. One is identifying the negatives and suggesting the possibilities of change but secondly it identifies what is positive and needs expansion.

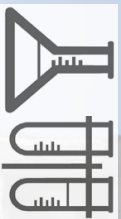
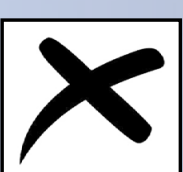




Fairs, M. (2008). Sand-bag houses by MMA Architects | Dezeen. [online] Dezeen. Available at: <https://www.dezeen.com/2008/02/26/sand-bag-houses-by-mma-architects/> [Accessed 05 Dec. 2016].



10x10 Housing Initiative



MMA Architects - South Africa

2007-2009

Where Mitchells Plain, Cape Town, SA.

Quantity 10 Families.

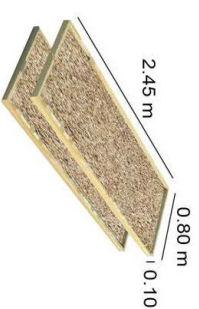
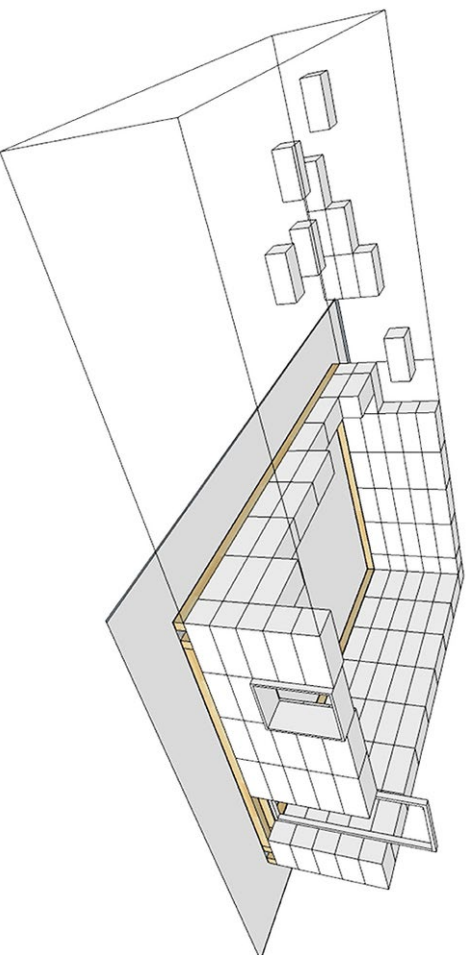
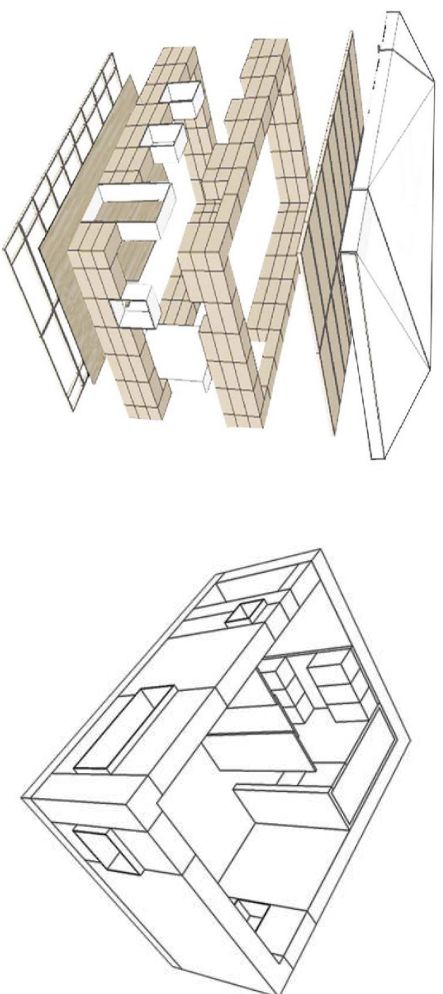
Size Two-story homes.

Cost 50,000 rand (USD \$7,000)
national government's housing
subsidy.

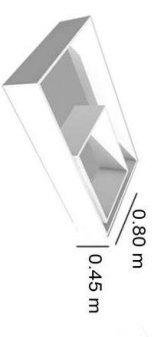
Material Timber EcoBeams,
sandbags(Nylon), metal mesh,
cement plaster, timber cladding,
timber doors, steel windows, metal
sheet roofing.

Social Value Mobilised community
members, local organisations, to
participate in creating dignified
housing, demonstrating the possibility
for replication in other communities.

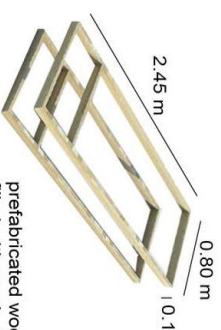




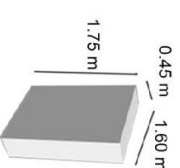
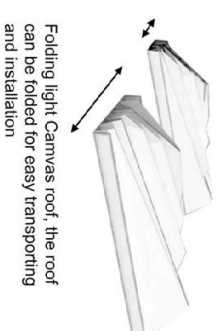
efabricated wooden frame filled with s



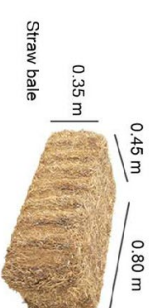
Prefabricated wooden door & win



prefabricated woc
filled with crush s



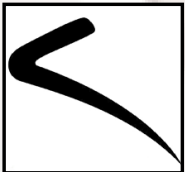
Cistern for collecting water rain



Straw bale



Hemp board flooring



What Design Can Do



Competition

Refugee Challenge 2016

Where Amsterdam, Netherlands.

Quantity 20 million refugees.

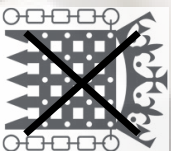
Size International/Global design

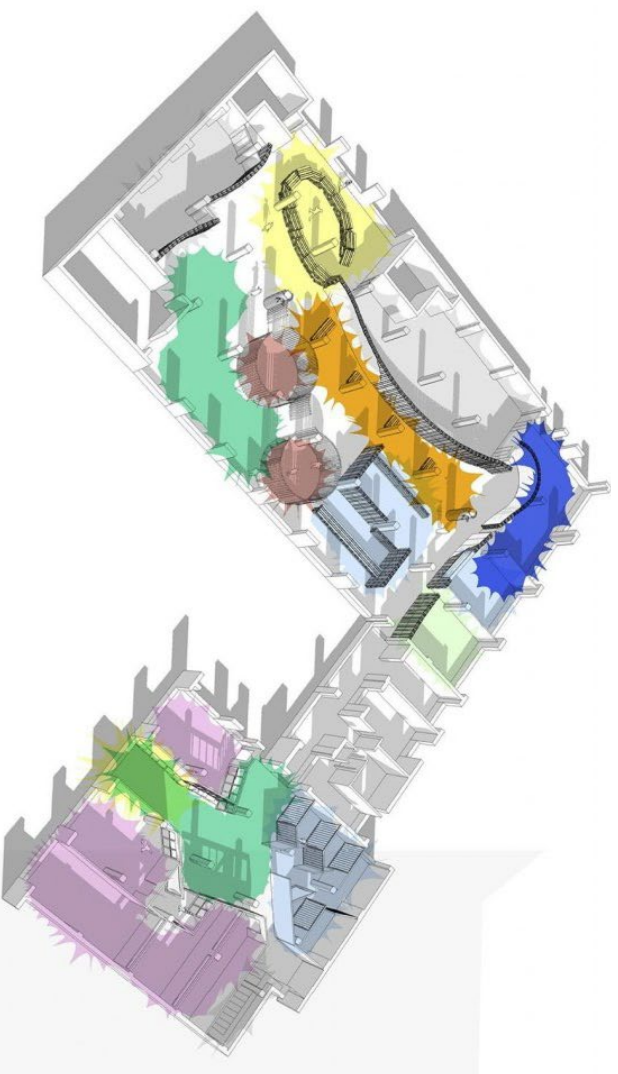
Competition - 631 entries.

Prize 10,000€ to develop prototype

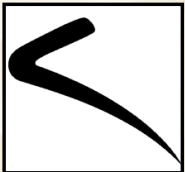
Material Local and biodegradable, prefabricated timber frame, timber doors and windows, hemp board flooring, straw bale, canvas roofing.

Social Value What Design Can Do was initiated as a platform to showcase design as a catalyst of change and as a way of addressing the societal questions of our time. A call on designers to stand up, and consider the beneficial contribution that designers can make to society. The Refugee Challenge searches for a game-changing idea for accommodating, integrating and helping the personal development of refugees.





Afhuk.org. (2016). Bermondsey Arts Space - AFHUK.org. [online] Available at: <http://www.afhuk.org/projects/bermondsey-arts-space> [Accessed 09 Dec. 2016].



Bermondsey Project



AFH UK - London

2006 - Present

Where SE London, UK

Quantity 140 Studios.

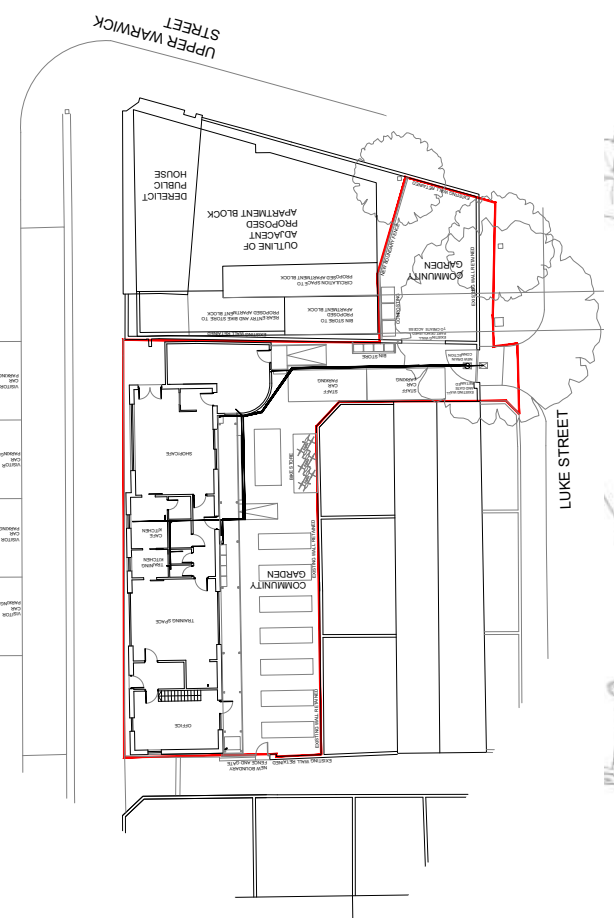
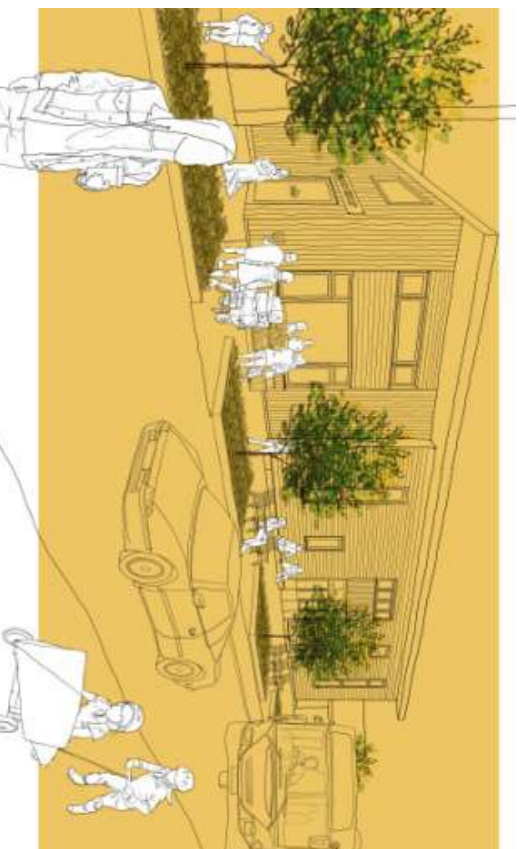
Construction Self build.

Material Interior Design.

Social Value The London Chapter

supports communities in need through design. Our mission is to promote architectural and design solutions in response to global, social and humanitarian crises. Key to this is listening to and respecting what people are concerned about and what they want. Set up by the homelessness charity Crisis in partnership with Bow Arts, an arts and vocational college for ex homeless people. It stimulates debate and to acts as a catalyst for our socially excluded members to re-engage and play an equal role in the project's and our city's creative output.







Food Central Toxteth



Squash Nutrition/URBED

2016

Where Liverpool, UK.

Quantity 1.

Size 180m²

Cost 'A successful bid to the Social Investment Business'

Material Heavily inspired by innovative eco-products including: Engineered timber frame, recycled paper insulation, fireproofing boards, timber cladding, and experimental recycled rubber foundations.

Social Value Will be an inspiring model of innovative and new approaches to health and well-being practice Has real community engagement and participation at its heart – and is firmly rooted in the community sustainable community run food store community cafe with integrated accessible and friendly food education professional creative nutrition and urban agriculture skills

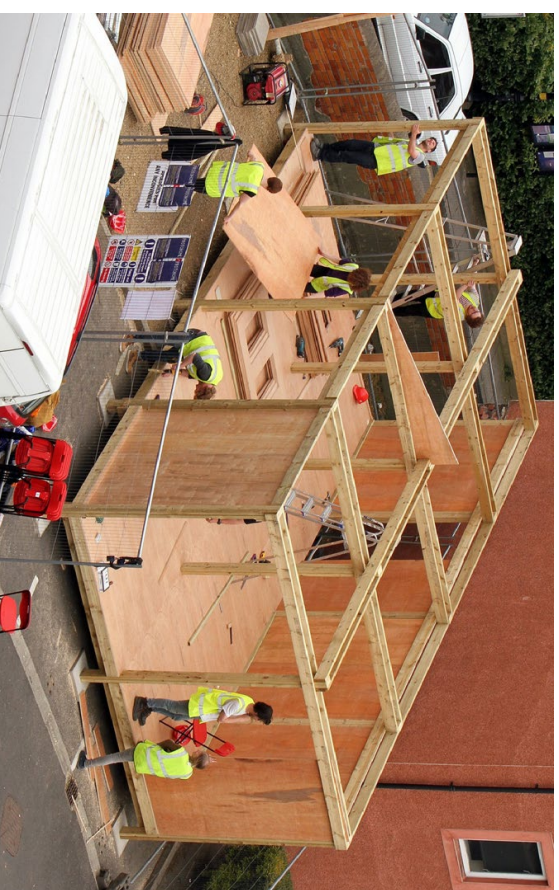
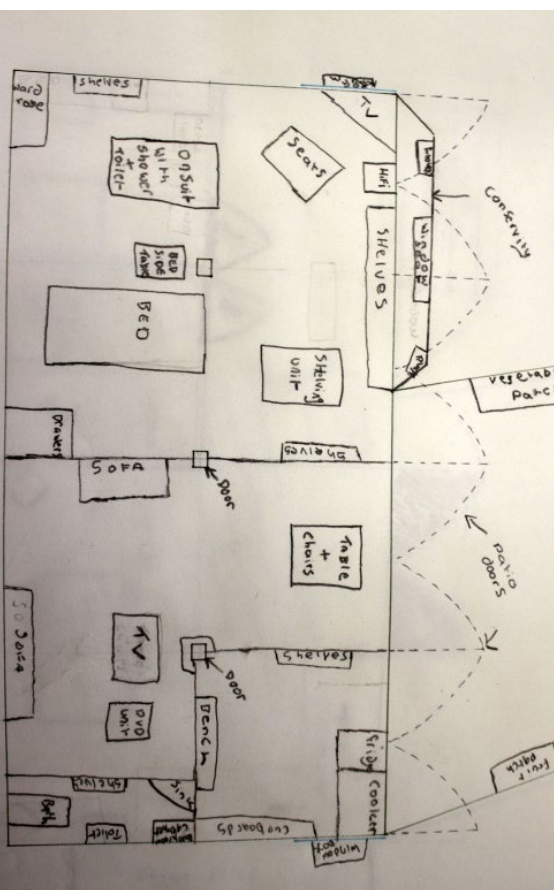
training one-stop community food centre and a beacon of social inclusion.

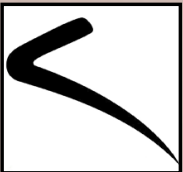
we have welcomed hundreds of people to community markets, garden cafes, and grown 3 community food gardens.

Since 2010 a committed group of community gardeners and cooks have been growing lots of food and lots of ideas for exciting community food projects.

The community design team of local residents including growers, artists, cooks, film-makers, environmentalists, bee-keepers and passionate vegetable fans, with help from architecture firm URBED







PROTohome ouseburne



Crisis/Xsite Architecture/TILT

May-August 2016

Where Newcastle, UK.

Quantity 1 prototype.

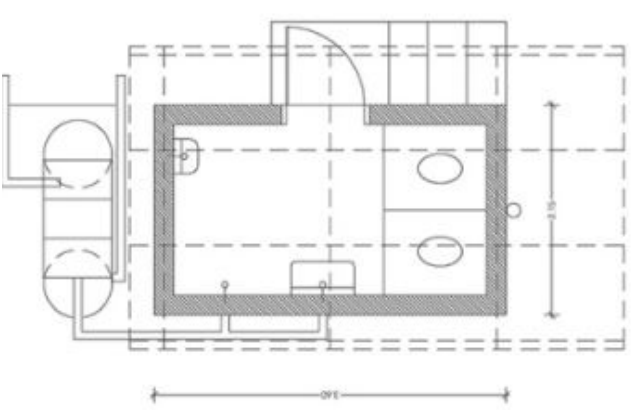
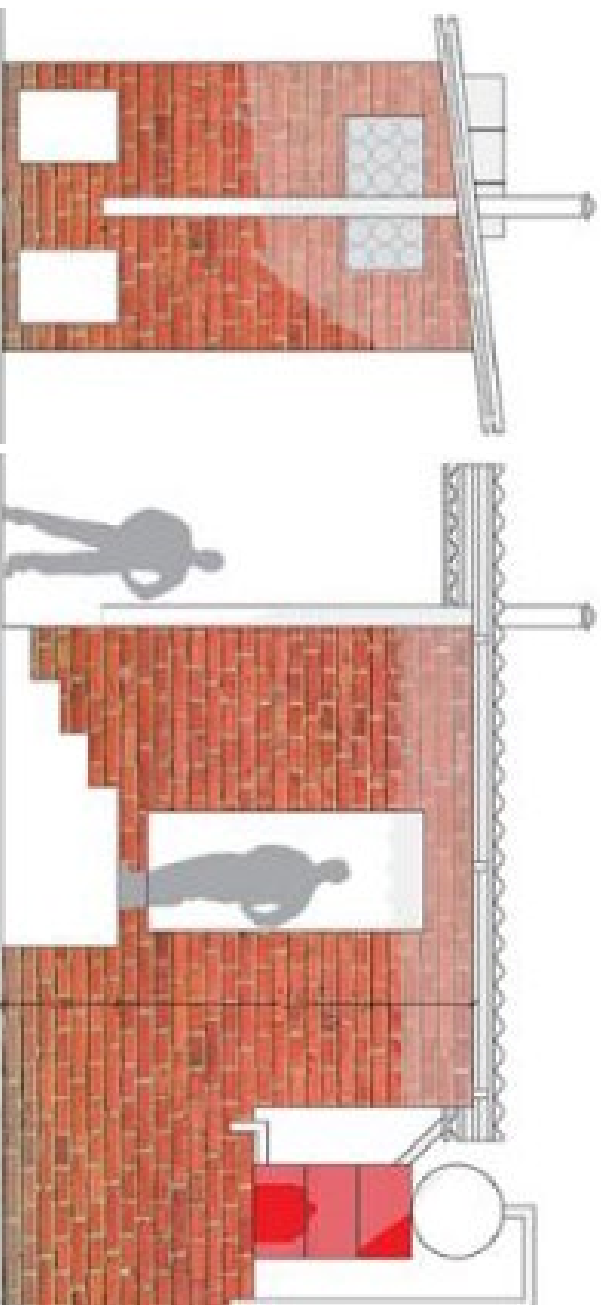
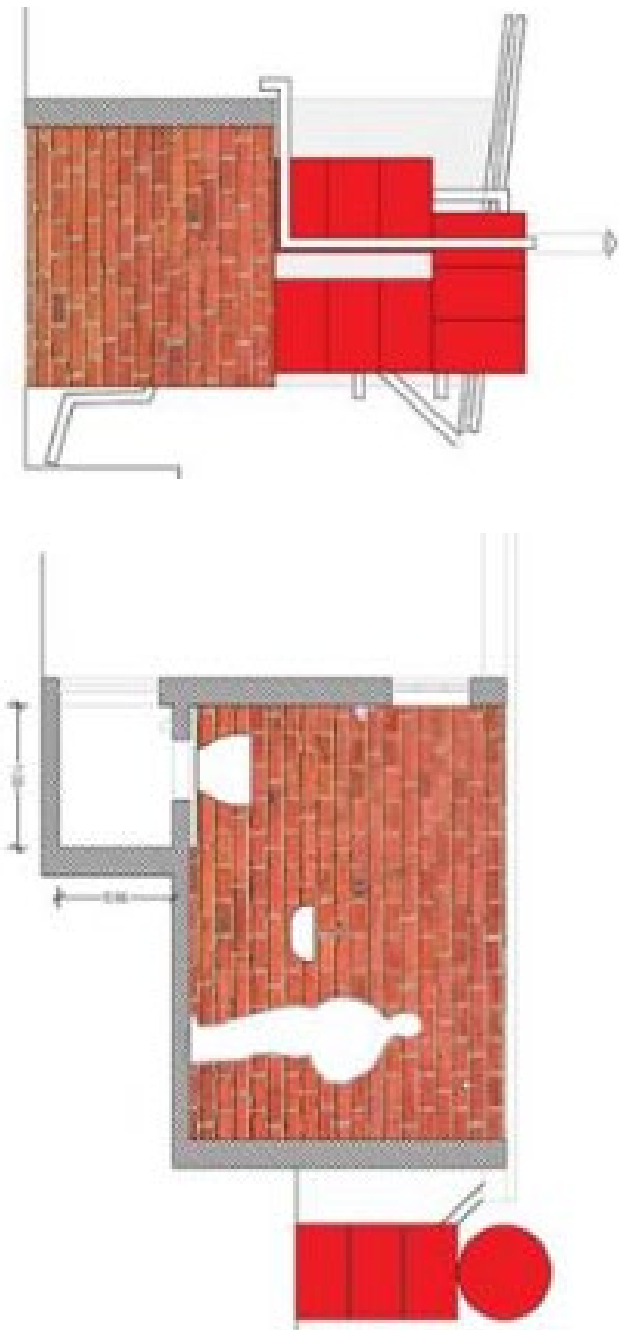
Size Single story, 32m² approx.

Construction Self build

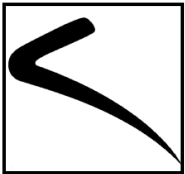
Material Timber

Social Value Working alongside an architect and a joiner, a group of individuals who have experienced homelessness developed a timber-frame model of self-build housing which is specifically designed for untrained self-builders. The 'house' hosted a programme of events and exhibitions examining the collaborative design/build process and wider issues to do with housing and homelessness in an austerity context and participatory alternatives. Training and increasing skills were at the heart of this project, the process was designed to act as a stepping stone to other more formal education or employment opportunities.

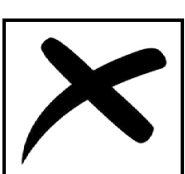




U-TT. (2016). Dry Toilet. [online] Available at: <http://u-tt.com/project/dry-toilet/> [Accessed 04 Dec. 2016].



Dry Toilet Venezuela



Urban Think Tank

2002

Where Caracas, Venezuela.

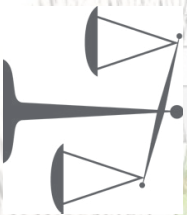
Quantity 1 prototype.

Size 4m².

Cost USD \$3,000.

Material Readily available locally made blocks, corrugated metal sheet roofing.

Social Value Residents lack clean water and sanitation, with communities often waiting years for the state to install these systems. It contributes fertilizer for small-scale agriculture. The Dry Toilet addresses real needs quickly, affordable, and with an approach that can be replicated on a massive scale.



Conclusion

At the start of the document, there are some of the readings from the course which depicted the terms of prefigurative theory.

Supplemented, in the form of icons (left), with which qualities from the text relate to prefigurative theory that is conveyed as an introduction to the document.

Afterwards, the precedent case studies tries to cover an interesting range of projects. For Example some of the projects are in other countries and some of them are in the UK.

Other variants include the platform in which architecture is produced, this is definitely the case in the competition example. In the slides, information about the project is displayed on one page along with the icons which again display a connection with prefigurative theory. One page shows images of the project taken from a variety of sources. All the projects I have chosen have their strong affiliations with the course theory, however all of them do have weak sides too.



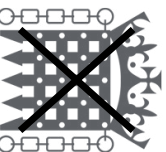
Community Solidarity



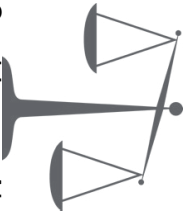
Decommodification



Experimental Practice



Limiting Government and Organisational Structure



Seeking an Alternative



Future in the Present



Expanding



Beyond Law

[Intentionally Blank]

Bibliography

- Harvey, D. (2000). *Spaces of hope*. 1st ed. Berkeley: University of California Press, pp.133-182.
- Harvey, D. (2014). *Seventeen contradictions and the end of capitalism*. 1st ed. London: Profile Books Ltd.
- Brenner, N., Marcuse, P. and Mayer, M. (2012). *Cities for People, Not for Profit*. 1st ed. New York: Routledge.
- Madden, D. and Marcuse, P. (2016). *In Defense of Housing*. 1st ed. London: Verso.
- Design like you give a damn [2]. (2012). 1st ed. New York: Abrams, pp.146-149.
- Fairs, M. (2008). Sand-bag houses by MMA Architects | Dezeen. [online] Dezeen. Available at: <https://www.dezeen.com/2008/02/26/sand-bag-houses-by-mma-architects/> [Accessed 05 Dec. 2016].
- Challenge. (2016). THE REFUGEE CHALLENGE FINALISTS ANNOUNCED! - Challenge. [online] Available at: <http://www.whatsdesigncando.com/challenge/finalists/> [Accessed 04 Dec. 2016].
- The Bermondsey Project Space. (2016). Home - The Bermondsey Project Space. [online] Available at: <http://bermondseyproject.com/> [Accessed 09 Dec. 2016].
- Collaborative, O. (2016). London, UK | Open Architecture Collaborative. [online] Open Architecture Collaborative. Available at: <http://www.openarchcollab.org/london-uk> [Accessed 09 Dec. 2016].
- Afhuk.org. (2016). Bermondsey Arts Space - AFHUK.org. [online] Available at: <http://www.afhuk.org/projects/bermondsey-arts-space> [Accessed 09 Dec. 2016].
- Urbed.coop. (2016). Squash Nutrition - Toxteth Food Central | URBED. [online] Available at: <http://urbed.coop/projects/squash-nutrition-toxteth-food-central> [Accessed 10 Dec. 2016].
- Selfbuildportal.org.uk. (2016). PROTOHOME launches in Newcastle. [online] Available at: <http://www.selfbuildportal.org.uk/latest-news/488-protohome-launches-newcastle> [Accessed 10 Dec. 2016].
- Protohome.co.uk. (2016). ABOUT. [online] Available at: <http://protohome.co.uk/about/> [Accessed 11 Dec. 2016].
- Crisis.org.uk. (2016). Crisis clients build 'prototype home' in Newcastle · News · Crisis. [online] Available at: <http://www.crisis.org.uk/news.php/1079/crisis-clients-build-prototype-home-in-newcastle> [Accessed 11 Dec. 2016].
- U-TT. (2016). Dry Toilet. [online] Available at: <http://u-tt.com/project/dry-toilet/> [Accessed 04 Dec. 2016].