

# PREFIGURATIVE ARCHITECTURES TEGUCIGALPA DESIGN DRIVER

---

## LEARNING FACILITY

SEREN BRESNER, SAMUEL HOLDEN, KONRAD KOLTON, JOSEPH SMITH, JESSICA SPENCER

## (u)PCCAA Process:

## Prefigurative Architectures Process:

### i) Community Characteristics

- a) transect walk
- b) matrix gen. data
- c) participatory mapping

### ii) Severe Weather Identification

- a) listing + ranking weather
- b) matrix community history
- c) severe weather timeline (meso)

### iii) Vulnerability Identification

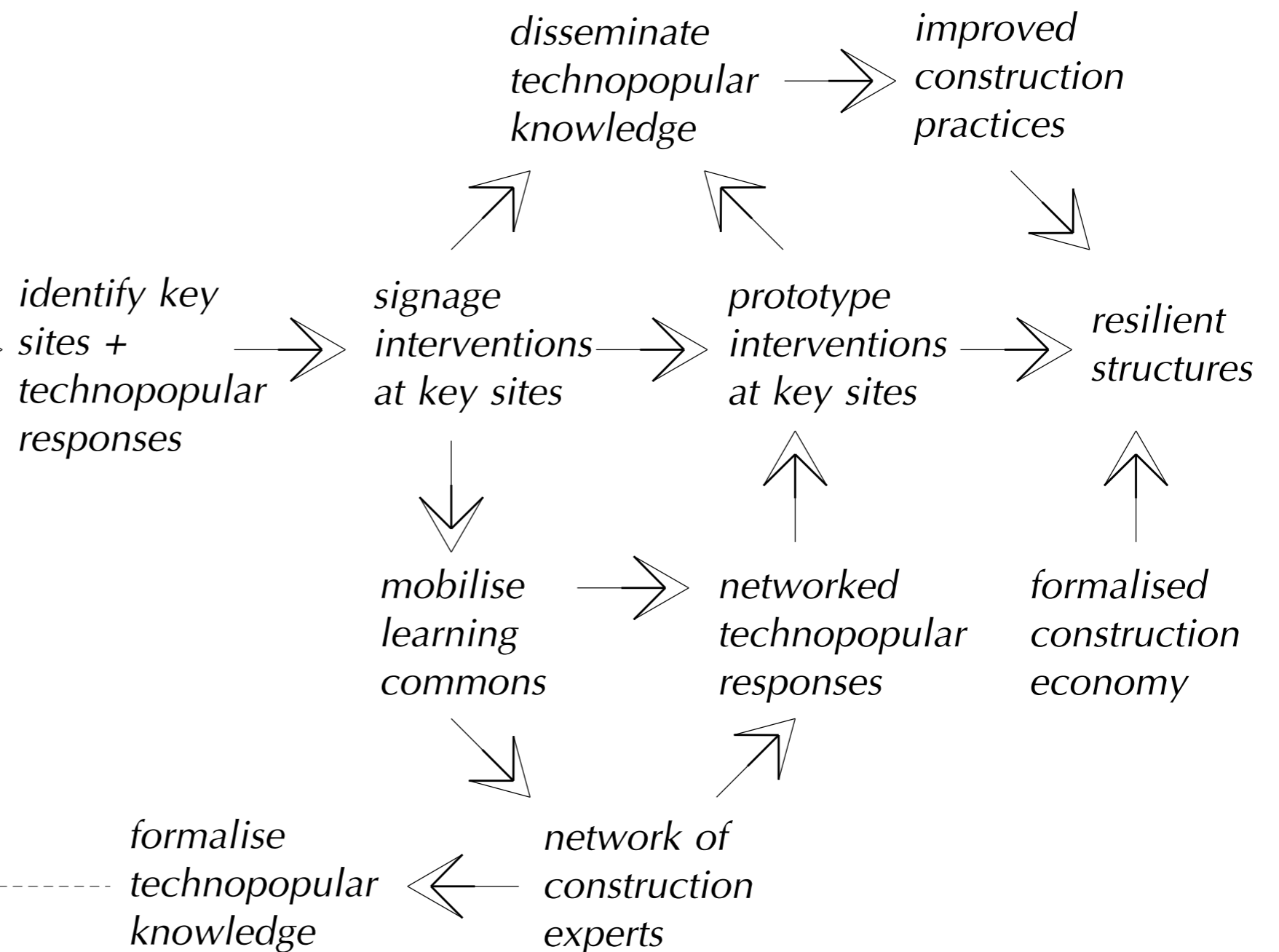
- a) community maps
- b) severe weather timeline (micro)
- c) causal flow diagram
- d) problem tree

### iv) Asset Adaptation

- a) listing + ranking assets
- b) matrix assets + responses
- c) causal flow diagram
- d) community map
- e) timeline

### v) Institutional Identification

- a) institutional mapping
- b) listing + ranking



PREFIGURATION PROCESS

(u)PCCAA Process:

i) Community Characteristics

- a) transect walk
- b) matrix gen. data
- c) participatory mapping

ii) Severe Weather Identification

- a) listing + ranking weather
- b) matrix community history
- c) severe weather timeline (meso)

iii) Vulnerability Identification

- a) community maps
- b) severe weather timeline (micro)
- c) causal flow diagram
- d) problem tree

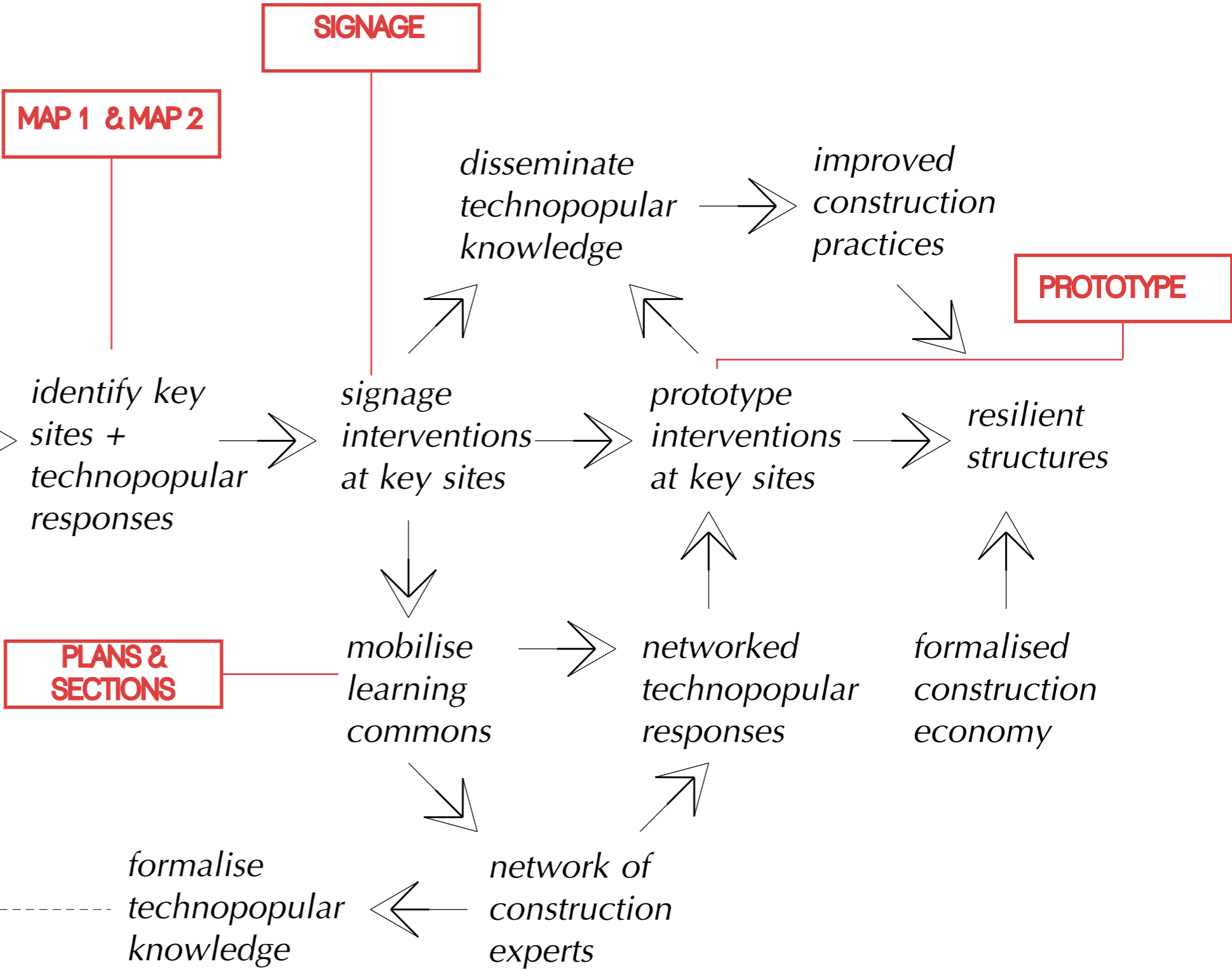
iv) Asset Adaptation

- a) listing + ranking assets
- b) matrix assets + responses
- c) causal flow diagram
- d) community map
- e) timeline

v) Institutional Identification

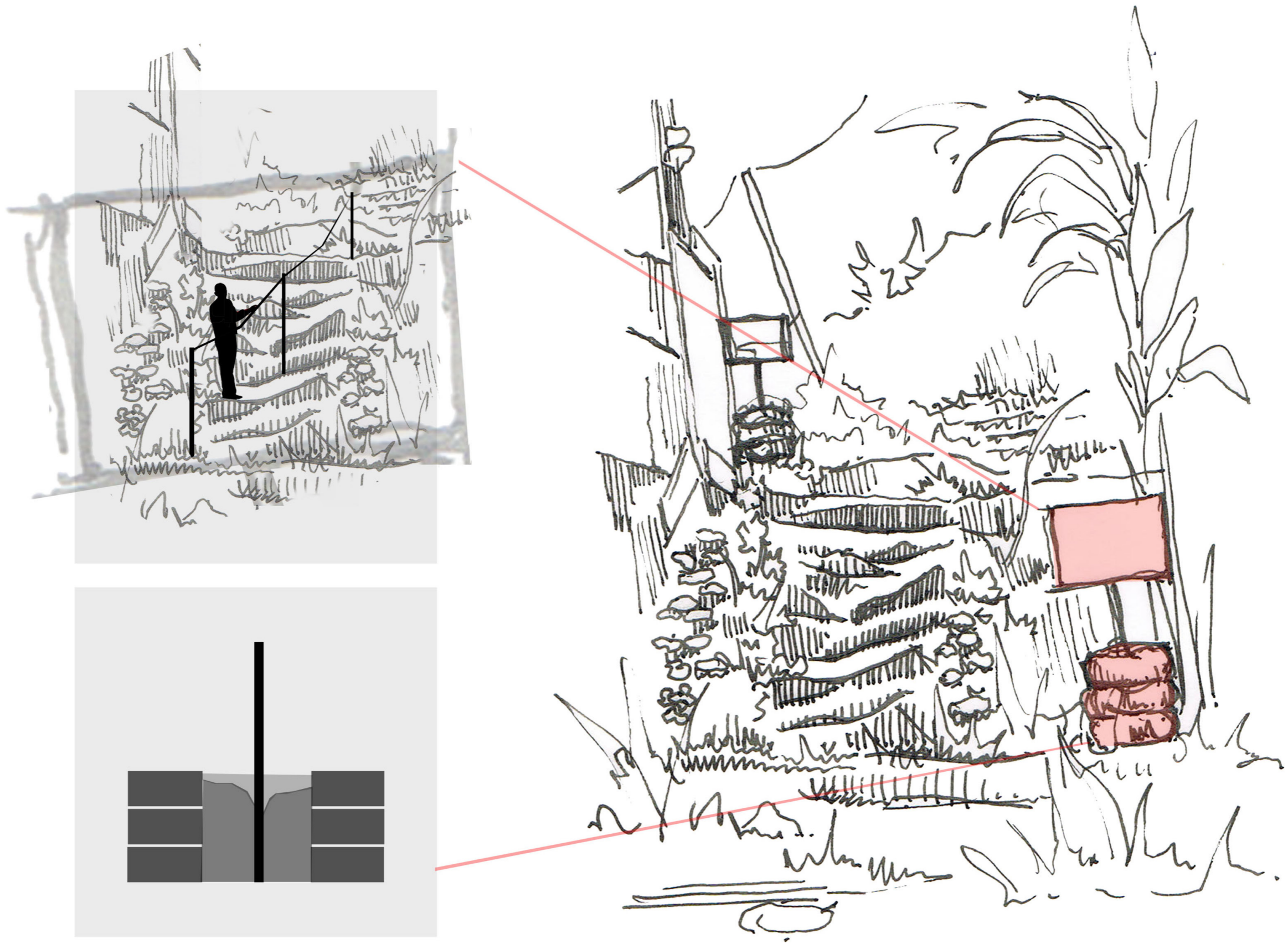
- a) institutional mapping
- b) listing + ranking

Prefigurative Architectures Process:



PREFIGURATION PROCESS SPECIFICATION

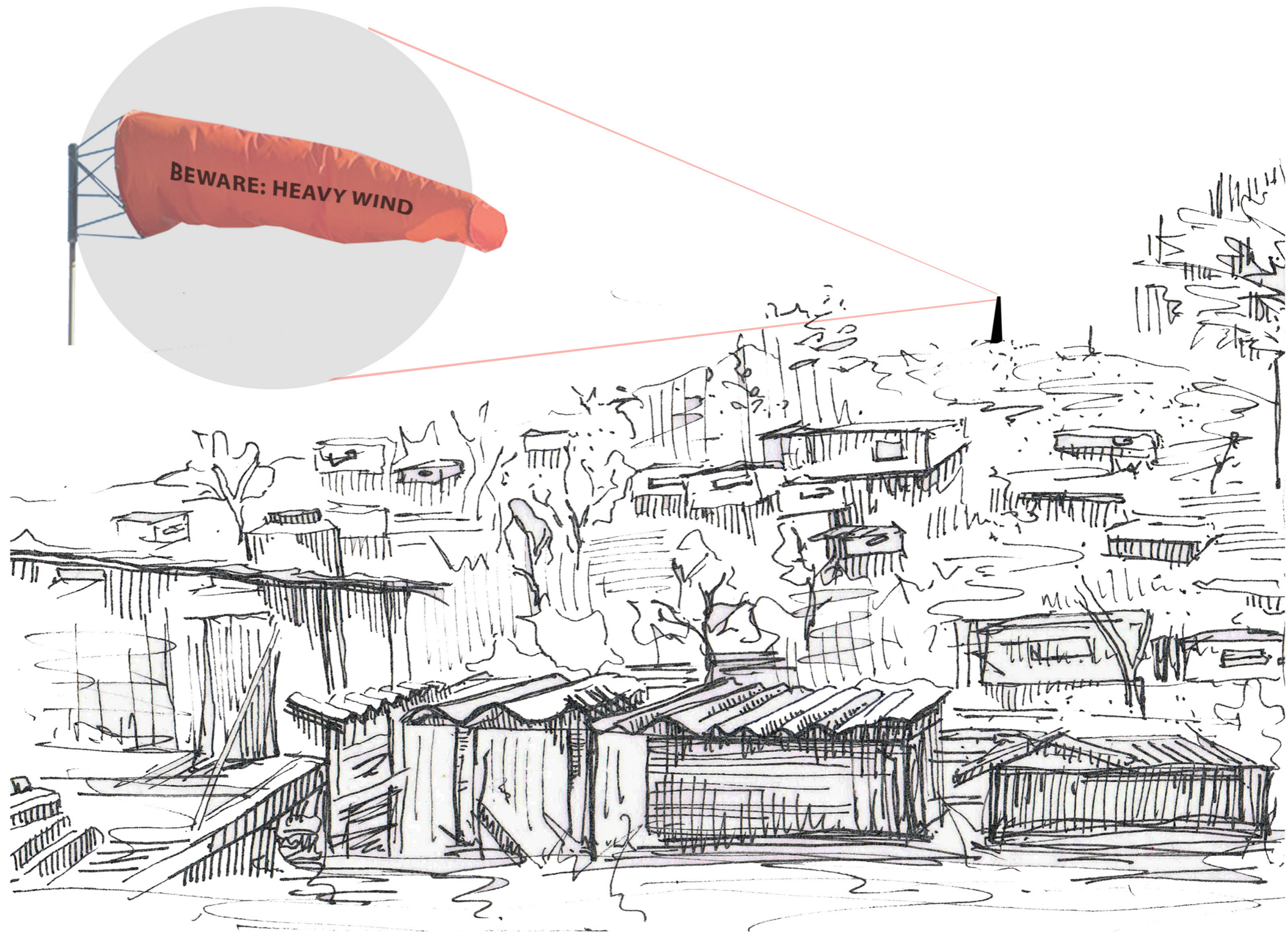




# SIGNAGE FOR STAIRS - SIGN 1

REACTIVE MEASURES: WE PROPOSE THE REUSE OF TIRES TO STRUCTURALLY SUPPORT OUR STENCIL SIGNAGE INTERVENTION. THE SIGNAGE WILL EXPLAIN HOW TO RE-PURPOSE THE STAIRS FOR SAFE USE IN RAINY SEASON

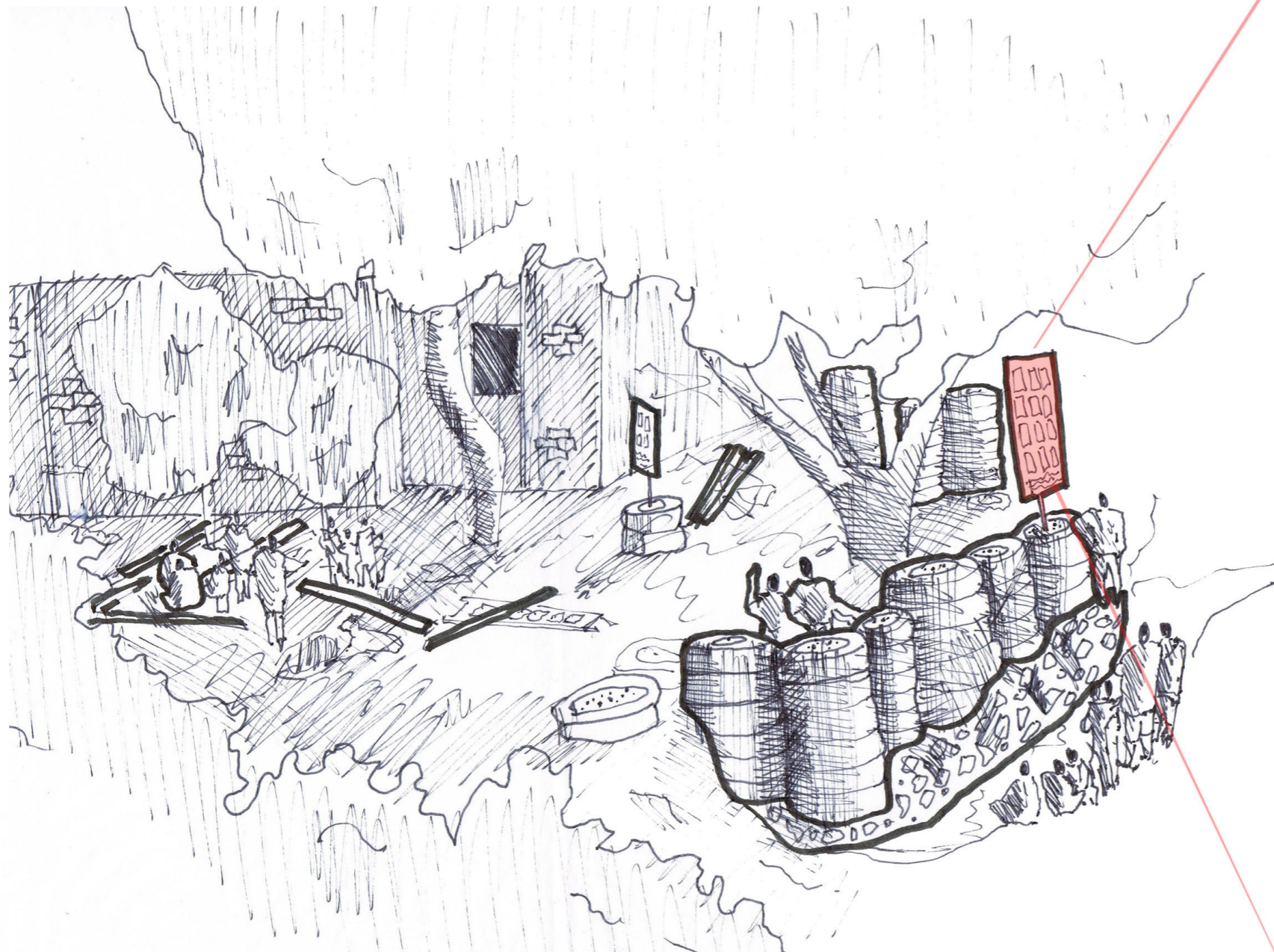




## SIGNAGE FOR HIGH WIND LEVELS- SIGN 2

REACTIVE MEASURES: SIGNAGE AS A WARNING INFRASTRUCTURE

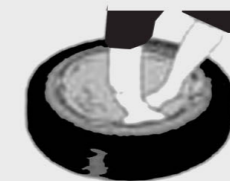




## METHOD



## WALL FRAMING USING TIRES



SOIL IS USED IN TIRE AND COMPACTED WITH A HAMMER. ONCE PACKED WITH DIRT, THE TIRE WALLS BULGE, INTERLOCKING WITH EACH OTHER

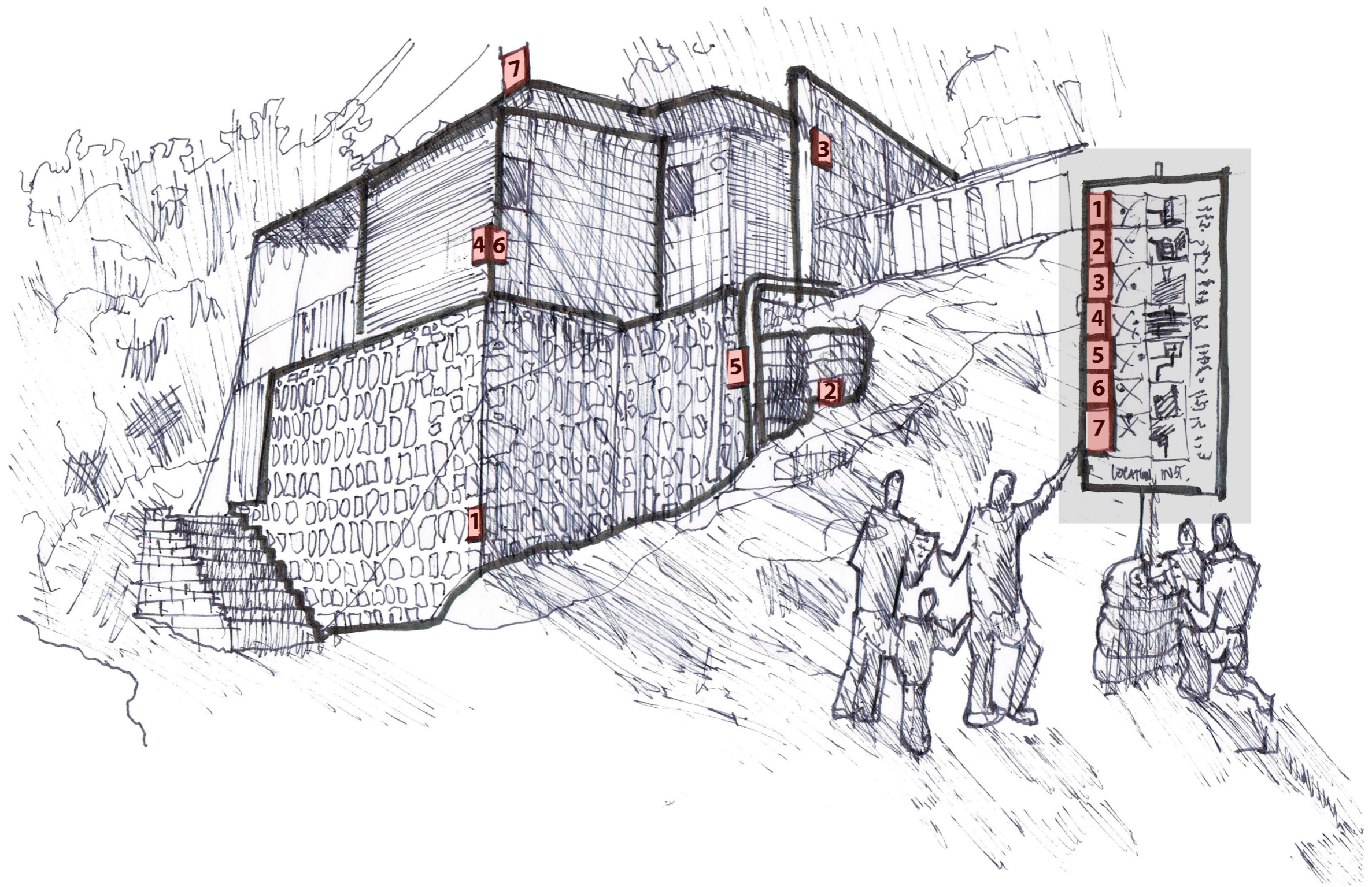


STACKING TIRES ON TOP OF EACH OTHER, EACH ROW OFF 1/2 TIRE FROM ONE ABOVE AND BELOW

# SIGNAGE FOR LANDSLIDES - SIGN 3

PREVENTATIVE MEASURES: DISSEMINATION THROUGH BUILDING PRACTICE

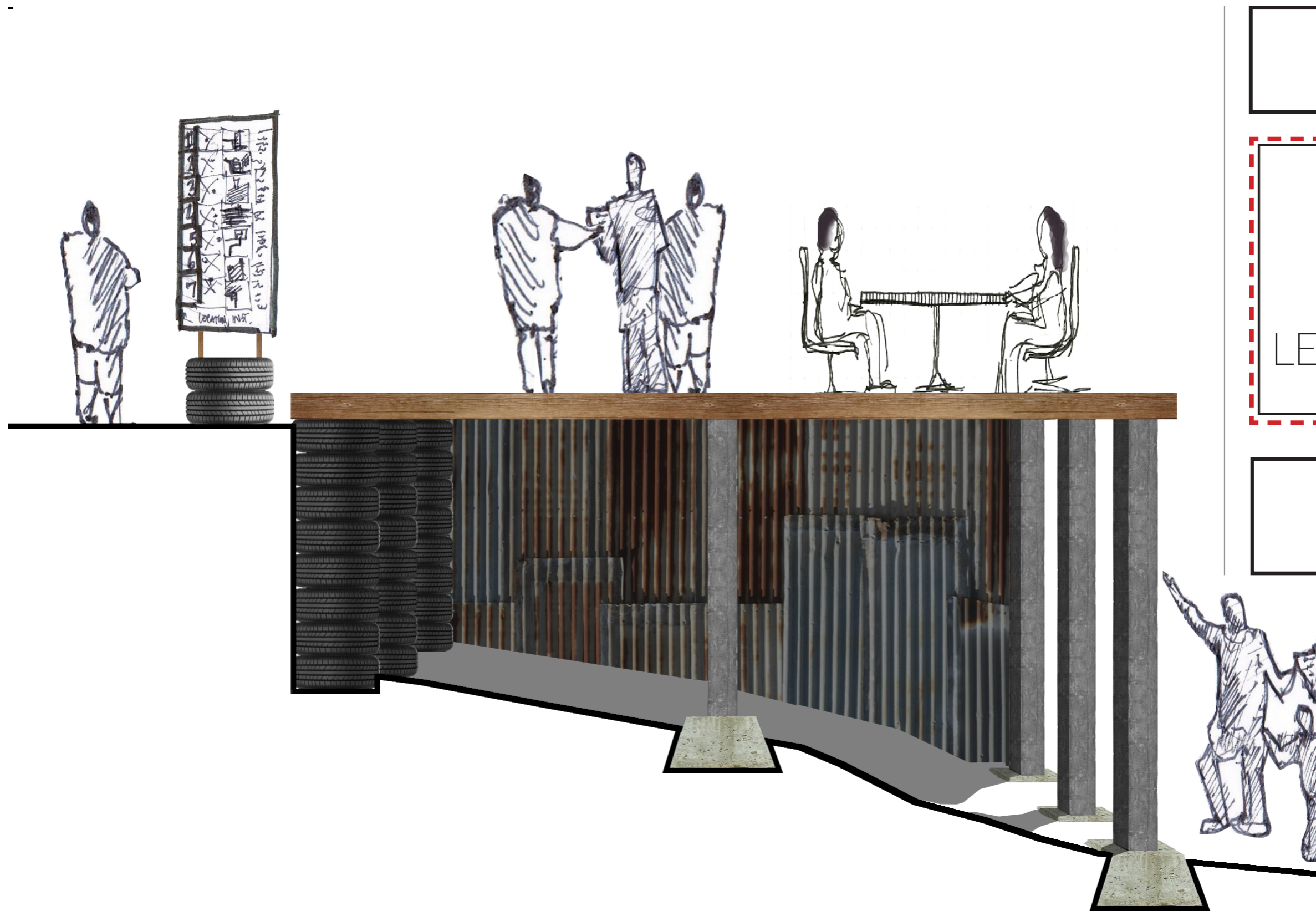




# SIGNAGE FOR PROTOTYPE- SIGN 4

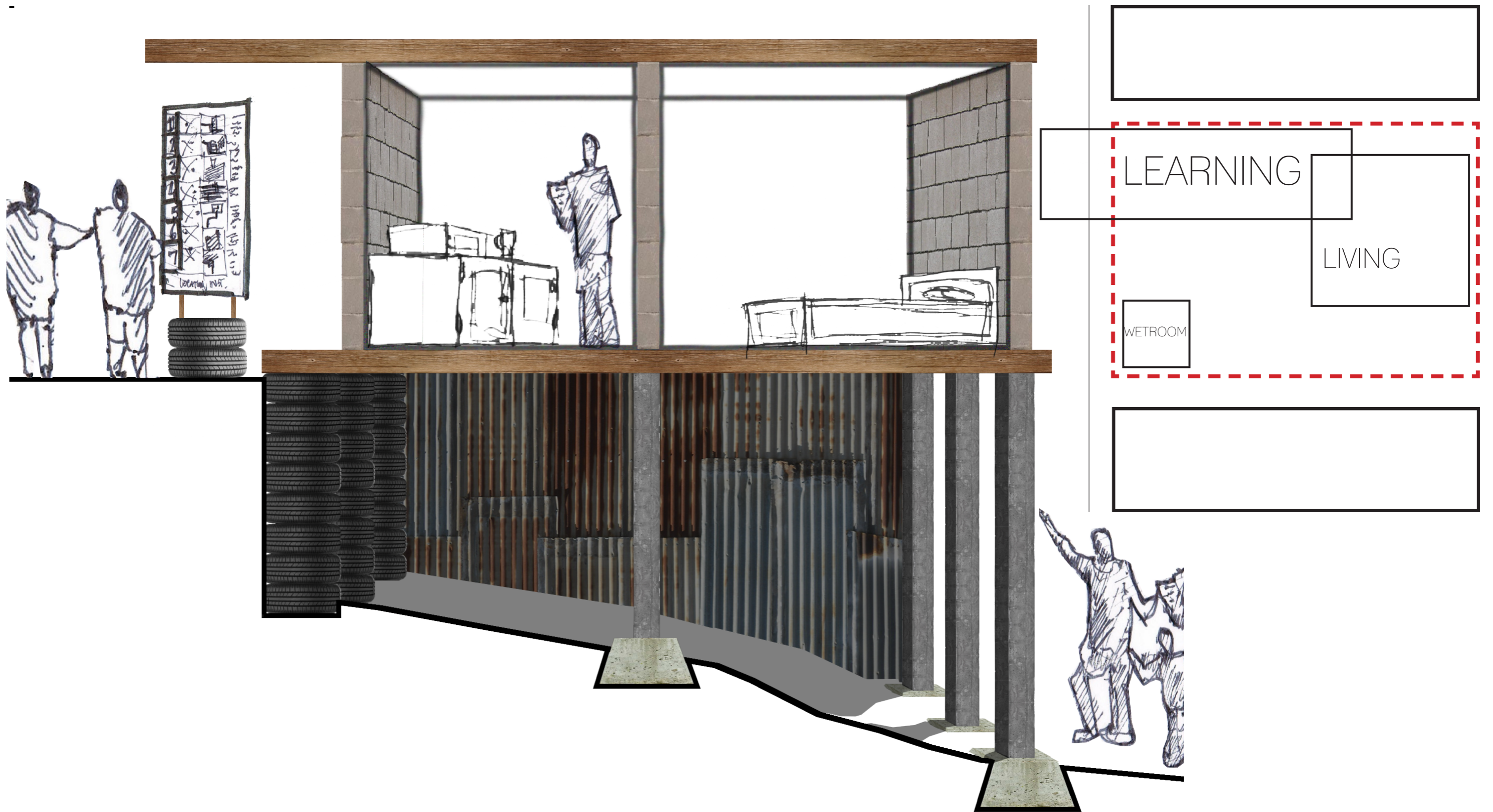
PREVENTATIVE MEASURES: PROTOTYPE AS SIGNAGE





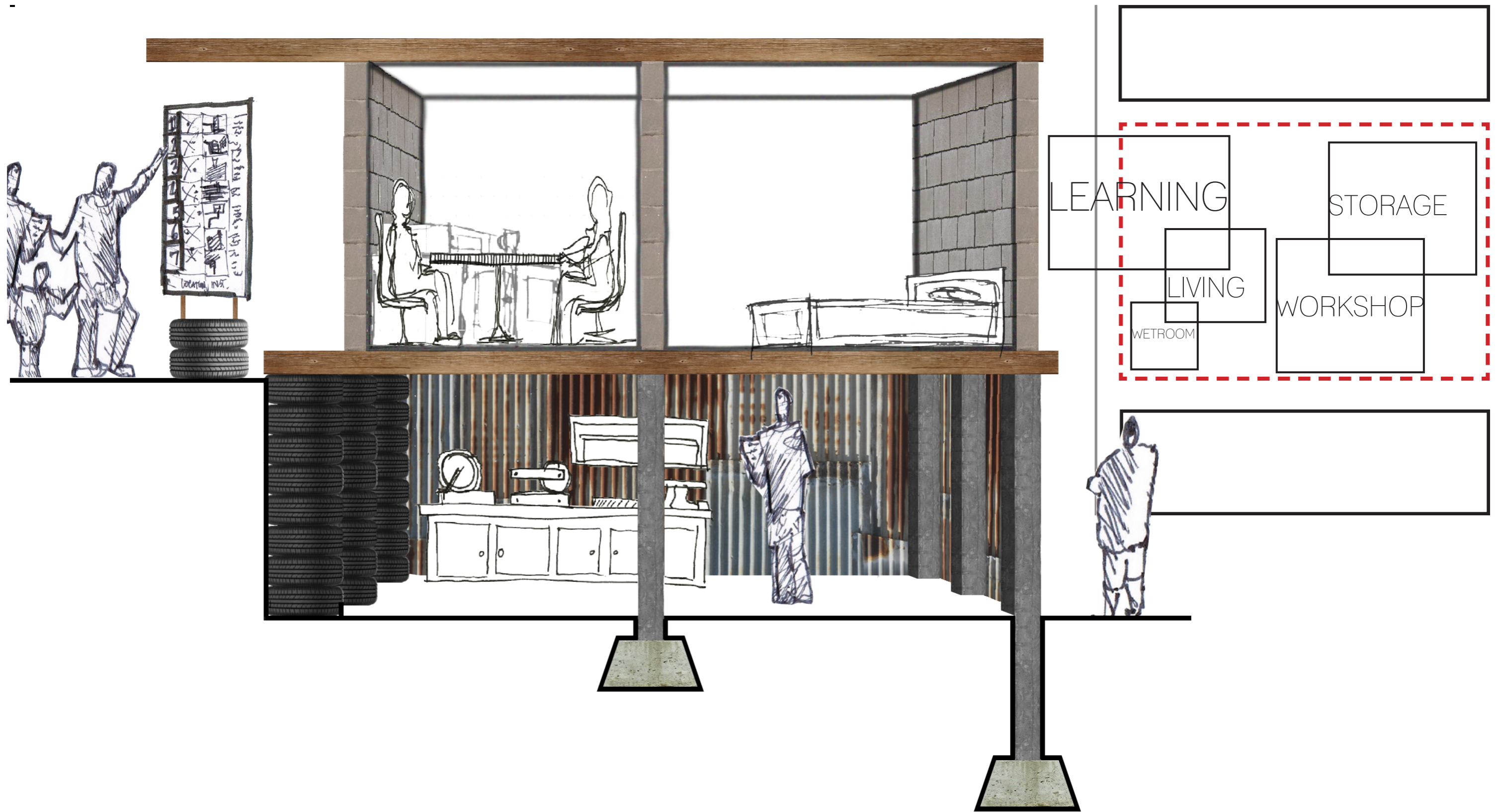
# LEARNING COMMONS - STAGE 1

INITIAL MEETING PLACE FOR THE EXCHANGE OF KNOWLEDGE AND INTRODUCTION TO TECHNOPOPULAR CONSTRUCTION



# LEARNING COMMONS - STAGE 2

FORMAL OCCUPATION BY CURATOR OF TECHNOPOPULAR KNOWLEDGES



# LEARNING COMMONS - STAGE 3

WORKSHOP INCLUDED TO ASSIST WITH THE DISSEMINATION OF TECHNOPOPULAR KNOWLEDGE